



EXAMINATIONS COUNCIL OF ESWATINI
Eswatini General Certificate of Secondary Education

CANDIDATE
NAME

--

CENTRE
NUMBER

--	--	--	--	--

CANDIDATE
NUMBER

--	--	--	--

FASHION AND FABRICS

6904/01

Paper 1 Theory

October/November 2019

2 hours

Candidates answer on the Question Paper.

Additional Materials: Coloured pencils (not yellow)
Ruler, eraser

READ THESE INSTRUCTIONS FIRST

Write your centre number, candidate number and name on all the work you hand in.
Write in dark blue or black pen.

You may use a soft pencil and eraser for diagrams or sketches.
Do **not** use staples, paper clips, highlighters, glue or correction fluid.

Section A

Answer **all** parts in the spaces provided on the question paper.

Section B

Answer any **two** questions in the spaces provided on the question paper.

Section C

Answer **one** question only in the spaces provided.

Do **not** spend more than **40** minutes on each question.
Enter the number of the questions in **Section B** and **C** in the grid below.

The number of marks is given in brackets [] at the end of each question or part question

For Examiner's Use	
Question Number	Marks
Section A	
Section B	
Section C	
Total	

This document consists of **16** printed pages.

SECTION A

Answer **all** questions in the spaces provided

- 1 (a) (i) Using at **least two** words in each case, name the style features indicated on the skirt below:



Fig. 1

- A
- B
- C
- D
- E [5]

- (ii) The pattern in **Fig. 1** suggests using calico for the skirt.

Choose words from the list below to complete the following statements.

hairy, coarse, cool, dull, warm, plain, smooth, medium, twill, warp, mercerised, heavy, weft.

The fabric is constructed with a weave
with threads passing alternately
over and under threads to form a
crosswise rib. The fabric is weight and has
a finish. Calico feels
and is to wear. [7]

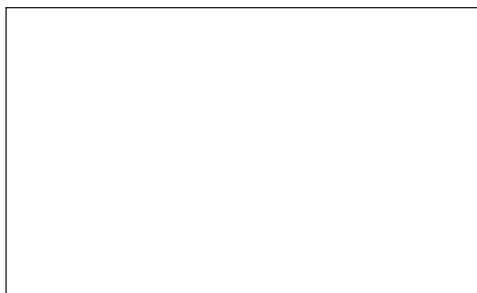
(iii) Draw and label the care symbols you would expect to find on the skirt made from the calico fabric described above.



.....



.....



.....



..... [4]

(b) Accessories are a popular fashion feature.

(i) Define “accessories”.

.....

..... [1]

(ii) Give **two** examples of accessories.

.....

..... [2]

(c) Outline **three** steps to follow when pressing a pair of school trousers made from a cotton polyester blend fabric.

- (i)
- (ii)
- (iii) [3]

(d) Describe how to prepare fabric before laying out the paper pattern pieces.

.....

.....

.....

.....

..... [4]

(e) Identify the following sewing equipment and state **one** function for each.

(i)

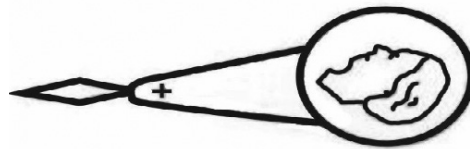


Fig. 2

Name of tool

Function: [2]

(ii)



Fig. 3

Name of tool

Function: [2]

(iii)

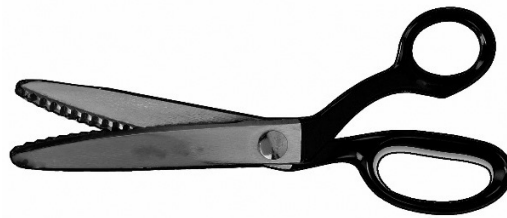


Fig. 4

Name of tool

Function: [2]

(f) For each of the following figure types, choose **one** suitable style feature from the following list, giving a reason for choice.

revere collar, gathered waistline, princess lines, large patch pocket,

(i) a tall, slim figure.

Style feature:

..... [1]

Reason for choice:

.....
..... [1]

(ii) a short, plump figure.

Style feature:

..... [1]

Reason for choice:

.....
..... [1]

(g) Describe **two** methods of applying colour to fabrics.

(i)
.....
.....
..... [2]

(ii)
.....
.....
..... [2]

Total Marks [40]

SECTION B

Answer any **two** questions in this section.

2 (a) (i) Explain what is meant by thermoplastic fibres.

.....
..... [1]

(ii) Name a fabric made from these fibres.

..... [1]

(b) Suggest a suitable hand stitch for the following processes:

(i) To hold an interfacing in place before machining.

.....

(ii) To finish a crossway binding around the neckline.

.....

(iii) To finish a hem on a skirt made from thick wool tweed.

.....

(iv) Filling a leaf shape with embroidery.

..... [4]

(c) Justify **one** use for each of the following processes on a garment:

(i) Frills/ruffles

.....

(ii) Casing

.....

(iii) Hem

.....

(iv) Darts

..... [4]

(d) Name and describe the following types of collars.

(i)

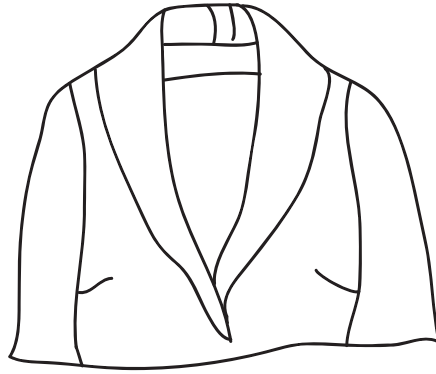


Fig. 5

Type of collar:

Description:

..... [2]

(ii)

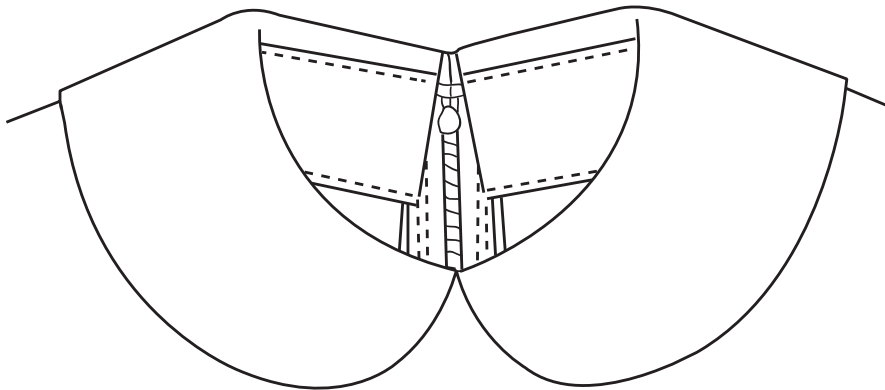


Fig. 6

Type of collar:

Description:

..... [2]

- (e) Using notes and labelled diagrams, explain how to sew an extended facing on a shirt made from cotton chambray.

[6]

Total Marks [20]

3 (a) Define the term "fashion trend".

.....
..... [1]

(b) Give **three** reasons why it is necessary to take accurate body measurements before using a pattern.

(i)
.....

(ii)
.....

(iii)
..... [3]

(c) On the diagram in **Fig. 7**, draw and label **four** pattern markings you would expect to find on the sleeve pattern.

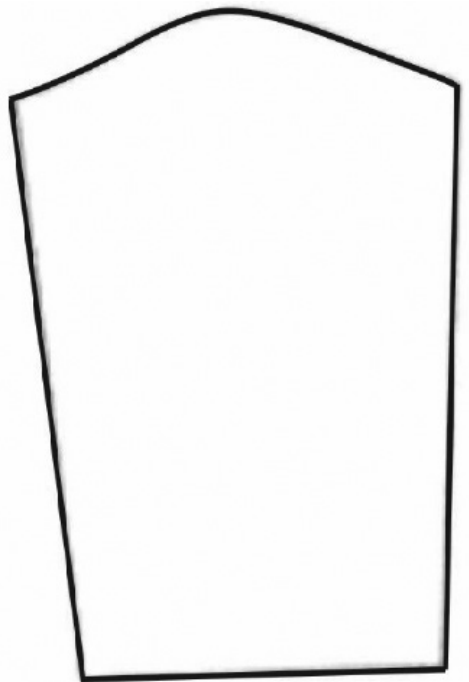


Fig. 7

[4]

(d) State **two** ways of neatening a hem on a skirt made of denim.

(i)

(ii) [2]

(e) Explain the following textiles terms.

(i) Rouleau loop

.....

.....

(ii) Patch pocket

.....

..... [4]

(f) Using notes and labelled diagrams, explain how to make a continuous wrap opening on a sleeve made of cotton calico.

[6]

Total Marks [20]

4 (a) Define the following items used in Eswatini traditional attire:

(i) *Sigcizo*

.....
..... [1]

(ii) *Libhele*

.....
..... [1]

(b) State the difference between:

(i) Shirring and smocking.

.....
.....
.....
..... [2]

(ii) Trimming and notching.

.....
.....
.....
..... [2]

(c) Colour enhances the appearance of fabric.

(i) Explain why a colour wheel is important.

.....
..... [2]

(ii) How are secondary colours made? Give **one** example.

.....
.....

Example [2]

(d) Explain how you would launder a knitted woollen jersey.

.....

.....

.....

.....

.....

..... [4]

(e) Using notes and labelled diagrams, explain how to prepare and attach a facing to the waistline of a cotton skirt.

[6]

Total Marks [20]

SECTION C

Answer **one** question in this section.

5. Discuss the importance of applying any **five** fabric finishes to natural fibres or fabrics.

Give specific examples in your answer.

[20]

Or

6. Wool is a natural fibre used to make clothes. Discuss:

(a) how wool fibres are prepared for the production of yarn;

(b) the properties of wool which make it suitable for clothing.

[20]

