

EXAMINATIONS COUNCIL OF SWAZILAND

Junior Certificate Examination

HISTORY

530/02

Paper 2

October/November 2018

2 hours

Additional Materials: Answer Booklet

READ THESE INSTRUCTIONS FIRST

Write your Centre number, candidate number and name on the Answer Booklet.
Write in **blue** or **black** pen.

Choose **one** option and answer all the questions in that option

OPTION A: Struggle for independence in Rhodesia

OR

OPTION B: Swaziland from King Sobhuza I to King Mswati III

At the end of the examination, fasten **all** your work securely together.
The number of marks is given in brackets [] at the end of each question or part question.

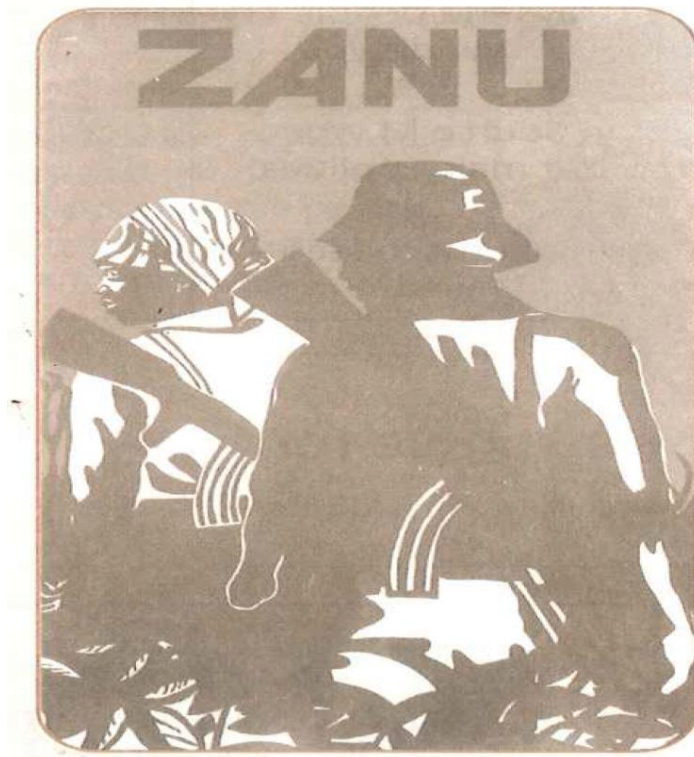
This document consists of **8** printed pages.

OPTION A: The struggle for independence in Rhodesia

Study the sources carefully and answer questions that follow. The background information is only used as a stimulus material. It must not be used to answer the question.

Background Information

A number of African women fled Rhodesia during the 1960s and 1970s to join guerrilla fighters in the military training camps.

Source A

A ZANU publication from the 1970s showing men and women guerrillas.

Source B

From a ZANU Women's League Journal.

Source C

Women started off as carriers of food and weapons for male guerillas. Women demanded the right to receive military training. A policy of equal training of men and woman was subsequently introduced. However, men were more likely to be chosen for training than women. Woman worked as political educators and health workers. They also brought arms and ammunition into operational areas for forward transfer.

From a history book published in 2009.

Source D

“...to be fair, however, we owe a lot to our progressive male comrades who have stood by us, fought for our rights, allowed us the **degree** of freedom to contribute to the best of our abilities for the national course.”

A speech by Mbuya Nehanda, a former woman liberation fighter.

Source E

Above all, the learning to shoot straight is one of ZANLA's most important rules of economics

From a ZANU Women's League Journal.

Now answer the following questions. Use the sources and knowledge to explain your answer.

1. Study Source A

What does the source tell us about the role of women in the liberation struggle in Rhodesia? Explain your answer using the source. [5]

2. Study source B and C

How far do these sources agree about the role of women in the liberation struggle in Rhodesia? Explain your answer using details of the sources. [8]

3. Study source D

Do you trust this source in what it is saying about the role of women in the struggle for independence in Rhodesia? Explain your answer using the details from the source and knowledge. [12]

4. Study all the sources

How far do these sources provide convincing evidence that women played an important role in the liberation struggle in Rhodesia? Explain your answer using details from the sources. [15]

[Total : 40 marks]

OPTION B: Swaziland from King Sobhuza 1st to King Mswati 3rd.

Study the sources carefully and answer questions that follow. The background information should only be used as a stimulus material. It must not be used to answer the question.

Background Information

Missionary activities in Swaziland centered on education and health. The missionaries pioneered in education and also in health.

Source A

Magubheleni Primary School, 1970.

Source B

Missionaries used schools and hospitals to attack some aspects of Swazi society and its values and customs such as polygamy and divination.

From a history book published in 1981.

Source C

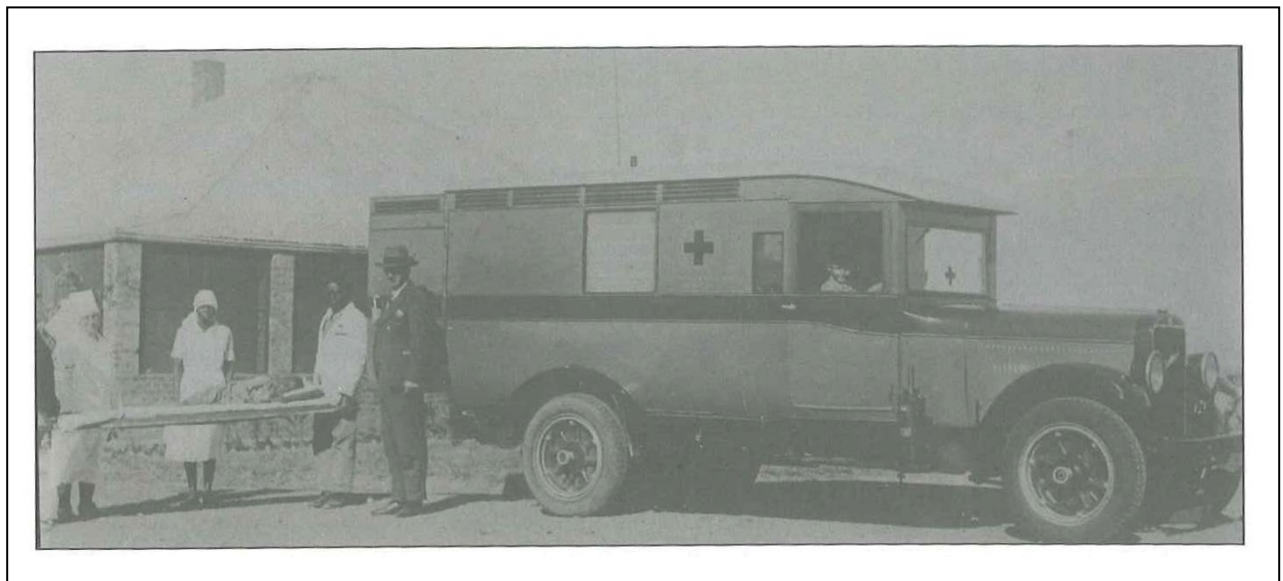
Missionaries built schools and ran hospitals out of the spirit of a humanitarian service but also as an attack on the values of the Swazi society. The medical mission was to destroy the use of traditional medicine, doctors and diviners.

From a history book published in 1981.

Source D

People in Swaziland are dying because they are lacking medical care.

A missionary writing to his fellow people in 1800s.

Source E

*The first ambulance to be used at
Raleigh Fitkin Memorial Hospital (RFM) in 1925.*

Now answer the following questions. Use the sources and knowledge to explain your answer.

1. Study source A

What does the source tell us about the role of missionaries in Swaziland? Explain your answer using the details of the source. [5]

2. Study source B and C

How far do these sources agree about the missionary work in Swaziland? Explain your answer using details of the sources. [8]

3. Study source D

Is this source reliable in what it is saying about EmaSwati? Explain your answer using the details from the source and knowledge. [12]

4. Study all the sources

How far do these sources provide convincing evidence that the coming of missionaries had positive impact among EmaSwati? Explain your answer using details from the sources. [15]

[Total : 40 marks]