



EXAMINATIONS COUNCIL OF SWAZILAND

Swaziland Primary Certificate Examination

CANDIDATE
NAME

CENTRE
NUMBER

--	--	--	--	--

CANDIDATE
NUMBER

--	--	--	--

AGRICULTURE

616/01

Paper 1

November 2018
1 hour 45 Minutes

READ THESE INSTRUCTIONS FIRST

1. Read **all** questions carefully
2. Answer **all** questions.
3. This paper consists of two sections: **Section A and Section B**
3. Section A consists of 20 multiple choice questions.
4. **Four** possible answers are given for each question. Choose the **best** answer and record your choice in **soft pencil** in the box provided.

EXAMPLE: 40. An insect has ...legs.

- A. 2
- B. 4
- C. 6
- D. 8

C

5. Section B consists of simple response on the question paper.
6. Answer **all** questions in the spaces provided.

<i>For Examiner's Use</i>	
Section A	
Section B	
Total	

This document consists of **16** printed pages and **1** lank page

Section A (20 Marks)

1. Which of the following refer to the three most common different kinds of weeds?
- A. Parasitic, root weeds, invasive weeds
 - B. Parasitic weeds, leafy weeds, invasive weeds
 - C. Parasitic weeds, poisonous weeds, invasive weeds
 - D. Parasitic weeds, invasive weeds, witch weeds
-
2. Which one of the following types of soil hold more water?
- A. Clay soil
 - B. Loam soil
 - C. Sandy soil
 - D. Silty soil
-
3. How would you recognize a cabbage plant that was damaged or attacked by the disease Black rot?
- A. Leaves have transparent patches
 - B. Leaves develop black spots that have a v-shape
 - C. Leaves develop yellowish spots that have a v-shape
 - D. There are green caterpillars on the cabbage leaves
-

4. What do we call the type of farming where a farmer grows crops on a smaller scale to sell?

- A. Cash crop farming
- B. Commercial farming
- C. Intensive farming
- D. Subsistence farming

5. What is the practice of pest and disease control where crops are grown early?

- A. Biological control of pests and diseases
- B. Chemical control of pests and diseases
- C. Integrated pest management
- D. Natural control of pests and diseases

6. Which type of land involves the ownership of land for specific period of time?

- A. Communal
- B. Swazi Nation Land
- C. Title Deed Land
- D. Freehold Land

7. Which of the following crops contains a lot of proteins?

- A. Beans
- B. Cotton
- C. Maize
- D. Potatoes

8. Which nutrient is needed by plants in smaller amounts?

- A. Nitrogen
- B. Phosphorus
- C. Potassium
- D. Zinc

9. When is the first flush of mushrooms harvested?

- A. About 8 days after casting
- B. About 10 days after casting
- C. About 13 days after casting
- D. About 17 days after casting

10. Which of the following vegetable pest feed on plant sap?

- A. Aphid
- B. Bollworm
- C. Caterpillar
- D. Cutworm

11. Figure 11.1 shows the structure of a flower

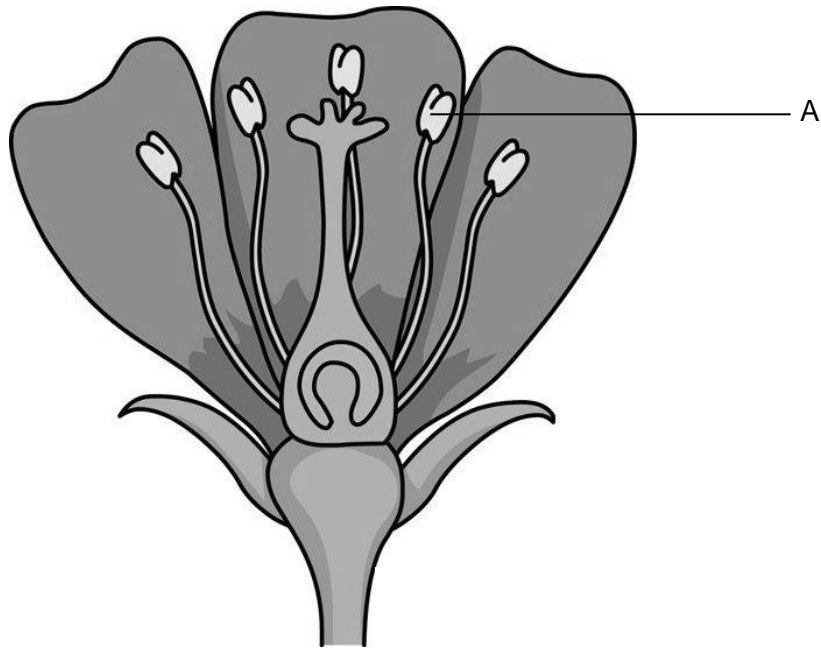


Fig. 11.1

What name is given to the part labelled A?

- A. Anther
- B. Filament
- C. Ovary
- D. Pistil

12. What is the special care and warmth provided to chicks after hatching?

- A. Brooder
- B. Brooding
- C. Hatching
- D. Incubation

13. Which layer of the soil is also known as the parent rock?

- A. A Horizon
- B. B Horizon
- C. C Horizon
- D. D Horizon

14. Which of the following are agents of soil erosion?

- A. Water and dust
- B. Water and gullies
- C. Water and streams
- D. Water and wind

15. Which method of planting is mostly used when planting maize?

- A. Direct planting
- B. Indirect planting
- C. Transplanting
- D. Row planting

16. When does the hatching of eggs occur?

- A. At 7 days of incubation
- B. At 14 days of incubation
- C. At 21 days of incubation
- D. At 28 days of incubation

17. Figure 17.1 below show a planted vegetable in the garden



Fig. 17.1

What activity is demonstrated in Figure 17.1?

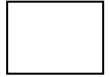
- A. Mulching
- B. Planting
- C. Shading
- D. Transplanting

18. What does the term mothering ability mean in poultry production?

- A. The rate at which chickens are produced
- B. The ability to be a good mother and care for offspring
- C. The ability of the mother to feed on dead or decaying matter
- D. The ability of the chicken to produce big and healthy chicks

19. Which region is the most suitable region for sugar cane production?

- A.** Highveld
- B.** Middleveld
- C.** Lowveld
- D.** Lubombo



20. What causes mould in harvested crops?

- A.** Harvesting too early
- B.** Harvesting on time
- C.** Harvesting too late
- D.** Harvesting correctly

SECTION B (80Marks)

1. (a) Outline any **three** benefits of growing vegetables.

- (i)
- (ii)
- (iii) [3]

(b) Explain modern farming.

.....
.....
.....
..... [2]

2. (a) Differentiate between Swazi Nation Land (SNL) and Title Deed Land (TDL).

.....
.....
.....
..... [2]

(b) Explain how Agriculture developed.

.....
.....
.....
.....
.....
..... [3]

3. Figure 3.1 shows garden tools

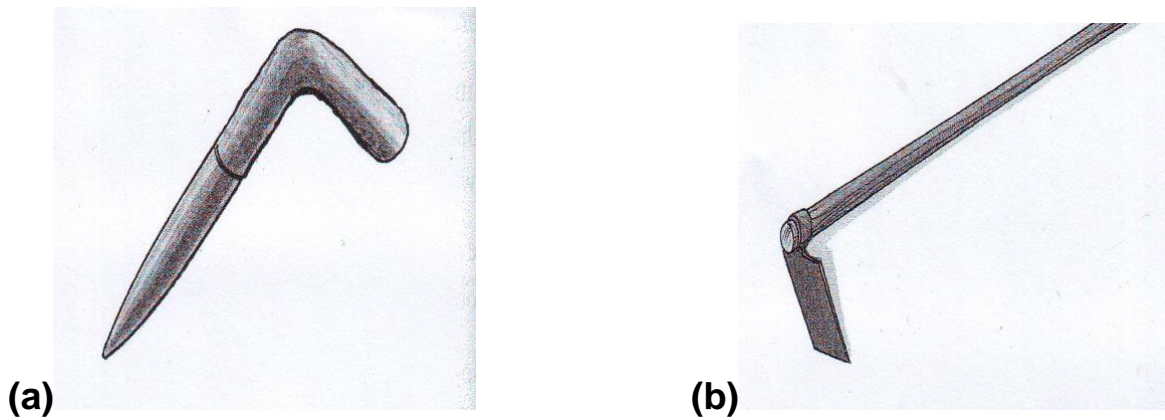


Fig. 3.1

(a) Name the tool labelled **A**

..... [1]

(b) What are the uses of the tool labelled **B**?

(i)

(ii)

(iii) [3]

(c) Explain why it is important to use the correct garden tools.

.....

.....

..... [2]

4. (a) Give any three things needed by a vegetable in order to grow strong and healthy.

- (i)
- (ii)
- (iii) [3]

(b) (i) Define the term tilth as used in agriculture.

.....
..... [1]

(ii) Why is it necessary to prepare a fine tilth for sowing carrot seeds?

.....
.....
..... [1]

5. (a) What are the two types of compost.

- (i)
- (ii) [2]

(b) Give any **three** materials which can be used when making a compost.

- (i)
- (ii)
- (iii) [3]

6. (a) Name the group for each of the following vegetables.

(i) Beetroot.....

(ii) Beans.....

(iii) Tomatoes

(iv) Spinach..... [4]

(b) Give any **two** ways in which plants make food?

(i)

(ii)[4]

7. (a) Describe the preparation done before the arrival of day-old chicks.

.....

.....

.....

.....

.....

..... [6]

8. (a) What is thinning?.

.....

..... [1]

(b) When should thinning be done?

.....
..... [2]

(c) What are the benefits of thinning?

(i).....

(ii).....

(iii)..... [3]

9. Explain how the following practices can be used to control pests:

(a) Weeding

.....
..... [1]

(b) Cultivation

.....
..... [1]

(c) Hand picking

.....
..... [1]

(d) Crop rotation

.....
..... [1]

(e) Early planting

.....
..... [1]

10.(a) What is a weed?

..... [1]

(b) Give one example of a parasitic weed.

..... [1]

(c) Outline the three main ways by which weeds can be spread.

(i)

(ii)

(iii)..... [3]

11.(a) What is the function of the following plant parts?

(ii) Leaves

.....
.....

(ii) Stem

.....
..... [2]

(b) Explain the process of photosynthesis.

.....
.....
..... [3]

12.(a) A farmer had a broiler business in the farm. Sort the activities below and state whether the business made a profit or loss.

Bought 65 broilers @ E55 each; 3 bags grower pellets @ E260/bag; 2 bottles Newcastle vaccine @ E60/bottle; sold 45 broilers @ E60 each; sold 20 broilers @ E50 each; bought 4 bags starter crumbles @ E275/bag.

Income	E	C	Expenses	E	C
Total					
Profit/loss					

[6]

13.(a) State any three materials which can be used as a mushroom substrate.

(i)

(ii)

(iii)..... [3]

14. (a) What is a soil structure?

.....
 [1]

(b) Name the soil types with the following characteristics.

Characteristics	Soil type
(i) Large particles	
(ii) Sticky particles	
(iii) Combines different particles	

[3]

15. (a) What is soil conservation?

.....
 [2]

(b) Explain how does soil erosion effect farmin?

.....

 [2]

(c) State any two ways of controlling erosion.

- (i)
- (ii).....
- (iii).....
- (vi)..... [2]

BLANK PAGE

Permission to reproduce items where third-party owned material protected by copyright is included has been sought and cleared where possible. Every reasonable effort has been made by the publisher (ECESWA) to trace copyright holders, but if any terms requiring clearance have unwittingly been included, the publisher will be pleased to make amends at the earliest possible opportunity.

